



zoek de letters

Kijk goed naar de plaat hiernaast.

Welke letter vind je **niet**?

Zet er een kruis door.

k

m

r

v

b

h

f

s

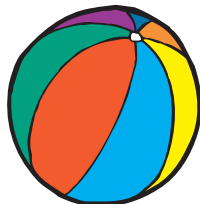
goed luisteren

Welke woorden beginnen met **dezelfde** letter?

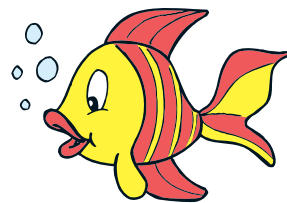
Trek lijnen.



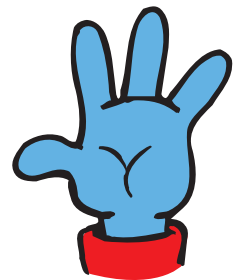
mond



bal



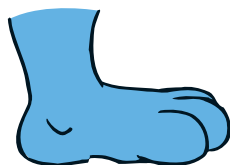
vis



hand



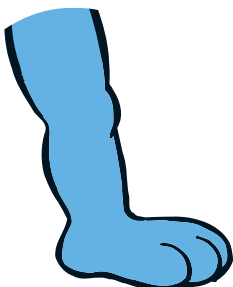
acht



voet



arm



been



mes



hond